

How to set up InkOwl ICC profile for SG400/SG800 in Corel Draw on Windows

Step 1: Download and move the profile

1. Download the profile from our website or that was emailed to you from us.
2. Once downloaded, you will need to move the file to the system folder on your computer where all of your profiles are stored. The location will depend on what version of Windows you are running.

Refer to the list below:

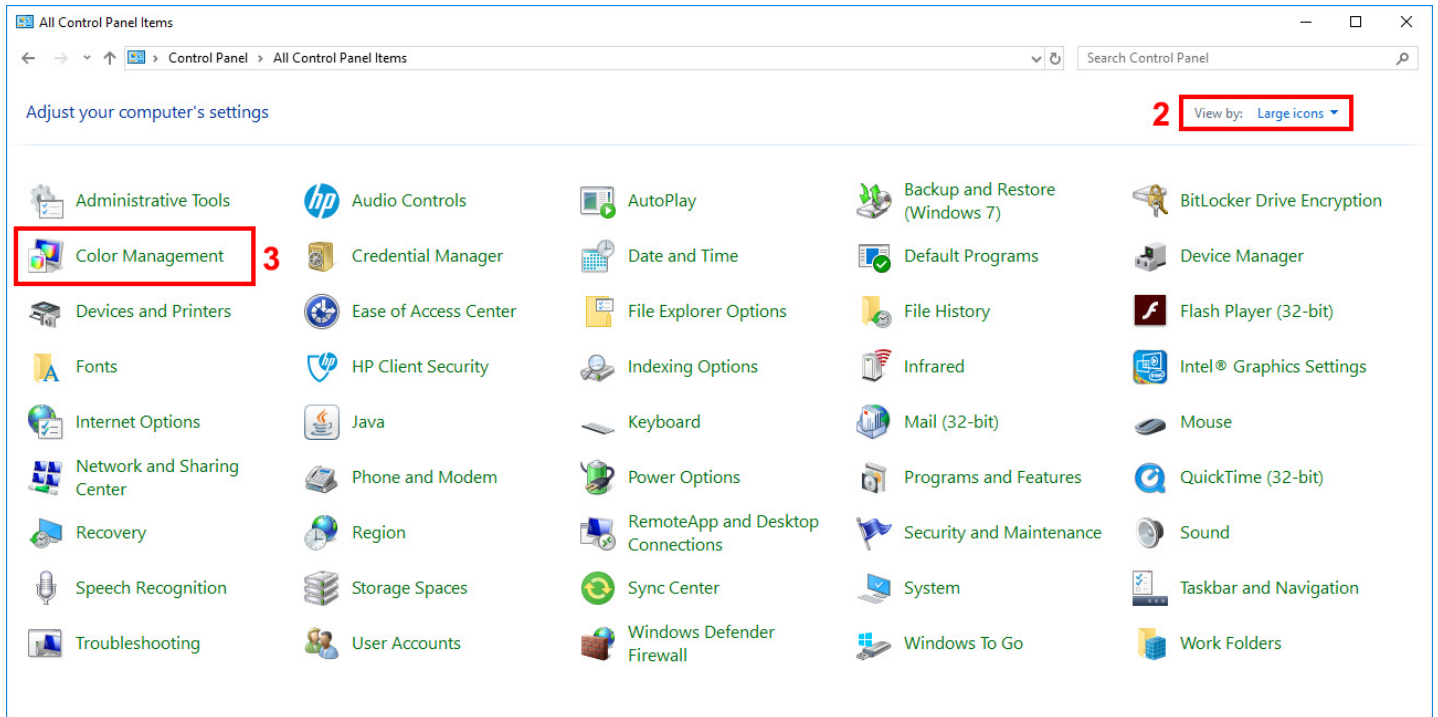
Windows 98/ME

C:\Windows\System\Color\

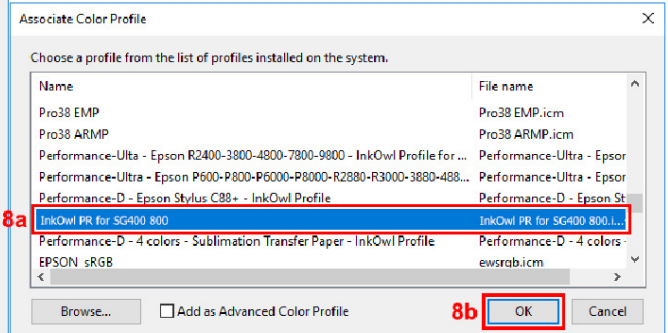
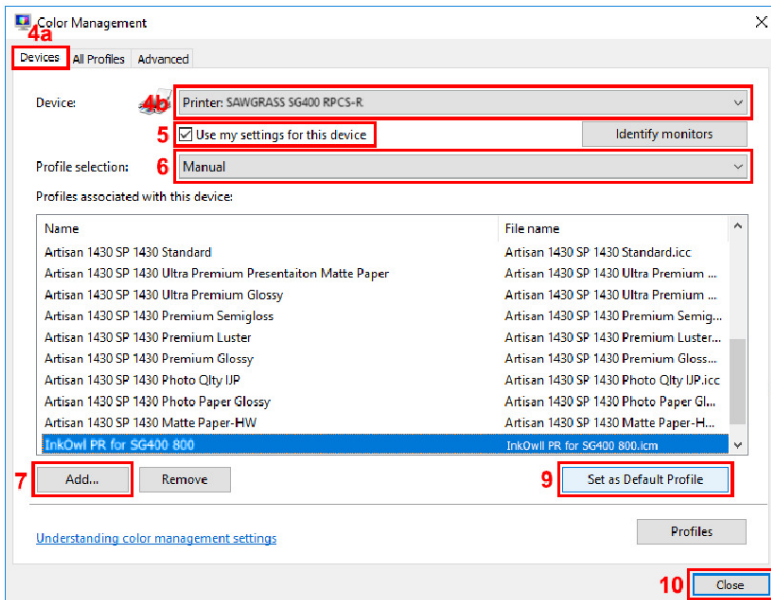
Windows XP/Vista/7/8/10

C:\Windows\System32\Spool\Drivers\Color\

Step 2: Set up the profile



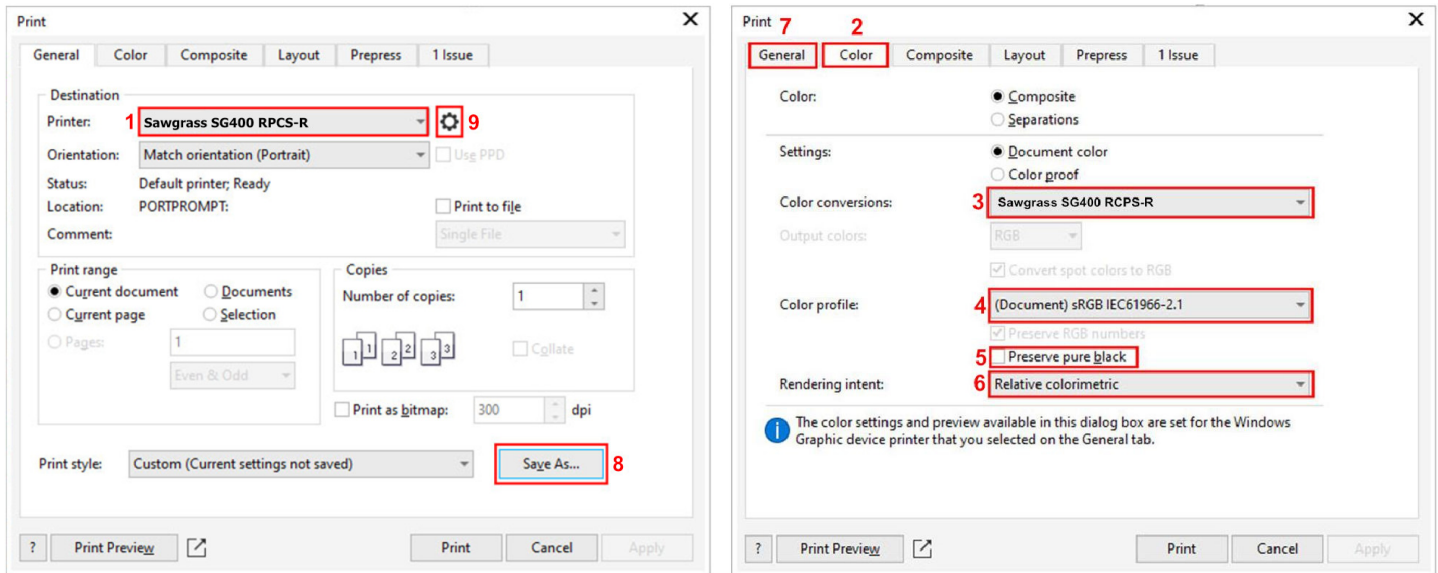
1. Open the Control Panel.
2. Set *View by:* to *Large icons* (if it isn't already set that way) so that the Control Panel looks like the image above.
3. Click on *Color Management*.



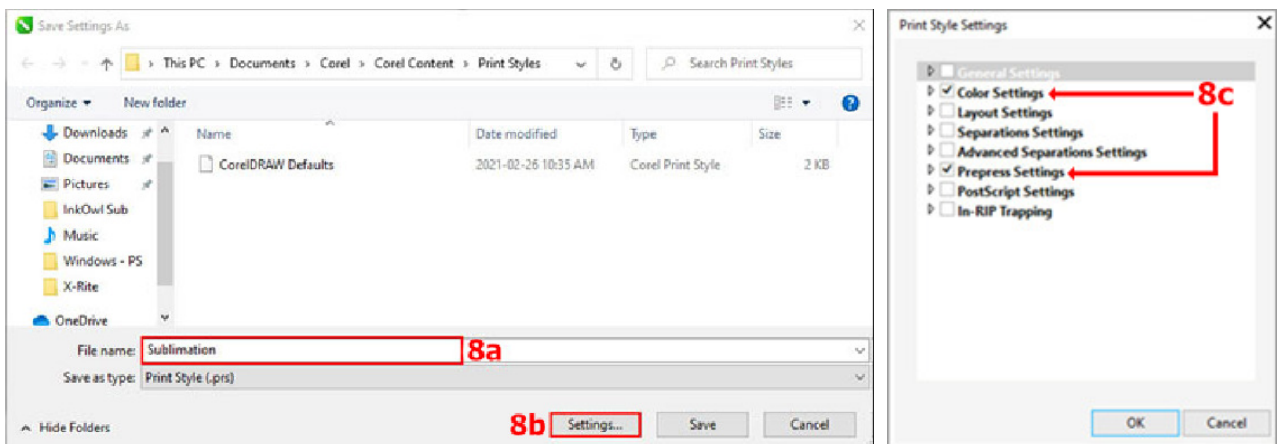
4. Under the *Devices* tab (4a), in the *Device* dropdown menu (4b), select the Sawgrass **SG400 RPCS-R** or **SG800 RPCS-R** printer.
5. Check the box labeled *Use my settings for this device*.
6. For *Profile selection*, choose *Manual*.
7. Click on *Add...*
8. Click on the profile you just downloaded and the click *OK*.
9. Select the added profile then click on *Set as Default Profile*.
10. Click *Close*.

Step 3: Set up Corel Draw

Press *File* and then *Print* to enter the print dialog window shown below. Please follow the steps listed below:



1. If not already there by default, select the *General* tab and select the Sawgrass **SG400 RPCS-R** or **SG800 RPCS-R** as your printer.
2. Select the *Color* tab. **If your version of Corel lacks the Color tab, skip directly to step 9.**
3. Set *Color Conversions* to the SG400 RPCS-R or SG800 RPCS-R.
4. Set *Color profile* to the same profile as the document or to an RGB Profile like sRGB IEC61966-2.1.
5. *Preserve pure black* should be unchecked.
6. Set *Rendering Intent* to Relative Colorimetric.
7. Select the *General* tab again.
8. To avoid having to do all this each time you print, we recommend saving these settings as a Print Style by clicking the *Save As...* button:
 - a. Select a name you want the Print Style to have.
 - b. Press *Settings...*
 - c. Check the same boxes as indicated in picture 8c then click OK.



9. Press the Gear symbol next to the printer to complete the driver settings (go to next page).

Step 4: Set up the driver for ICM mode

Once in the Printing Preferences menu, follow the steps below to ensure you are printing with the optimal print settings for our profile.

1. In the *Paper Type* dropdown menu, select the option *Postcard*.
2. In the *Select Print Quality* dropdown menu, select the option *High Quality*.
3. Click on the *Detailed Settings* tab.
4. In the *Menu:* list of options, select the option *Print Quality*.
5. In the *Color Profile:* dropdown menu, select the option *Use ICM*.
6. In the *Gray Reproduction:* dropdown menu, select the option *CMYK for Image*.
7. Go back to the original screen by clicking on *One Click Presets*.
8. Click on *Register Current Settings...* so that you can save these settings as a preset for your convenience later.
9. Press *OK* to apply these settings.

Press print! The profile will be applied to your design as it is sent out to the printer. Don't forget to mirror your images before-hand if required!

